

# Xiamen University Centenary Celebrations

## University Mission in a Post-Covid World

Professor Tan Eng Chye

5 Apr 2021



# Contents

**Emerging post-COVID  
world**

- **Complex and inter-related challenges**

**Education Reform**

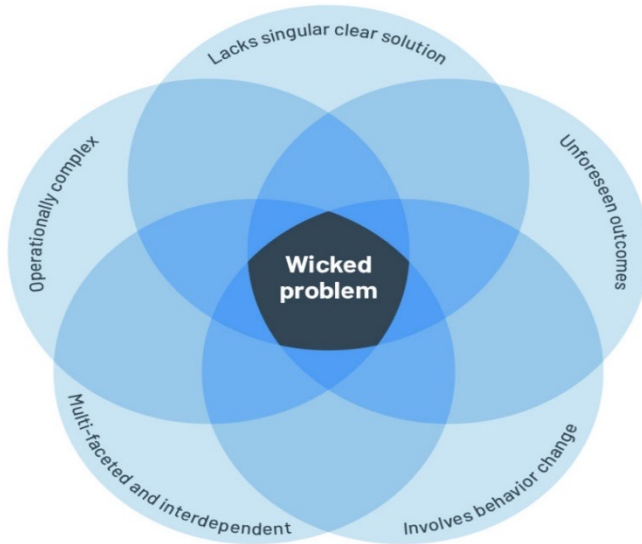
- **Preparing for a more uncertain world**

**Experiential Learning**

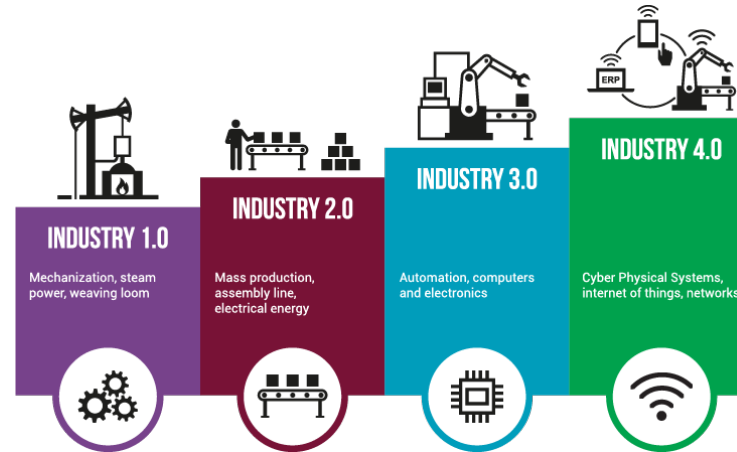
- **Application and integration beyond  
the classroom**

**Lifelong Learning**

- **Diverse pathways and seamless  
integration**



Wicked Problems



4<sup>th</sup> Industrial Revolution



Lifelong Learning



Digitalisation in all domains of living

# What We Need to Do

- ✓ Make our graduates agile and adaptable, and effective problem solvers
  - ✓ Adept at **solving problems** by integrating knowledge and skills from several disciplines;
    - ✓ Problem-based pedagogy with focus on experiential learning;
  - ✓ **Lifelong learners**, able to learn and enhance their knowledge and competencies throughout their lives
  - ✓ **Position NUS graduates well** for the post-COVID world
  
- ✓ Deliver an education that is truly transformative and closely aligned with industry needs
  
- ✓ Infuse interdisciplinarity at all levels of education at NUS

# Experiential Learning

✓ Work and learning are intertwined

✓ Co-ops, internships, apprenticeships

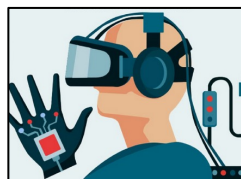
✓ Messy but engaging real-world environments

✓ Immersive technologies

✓ Virtual reality

✓ Augmented reality

✓ Mixed reality



**Cognitive**

Memorizing facts



**Experiential**

Doing and experiencing



Passive



Active

Observation



Immersion

Theoretical



Real world experience

Memorizing



Experimenting

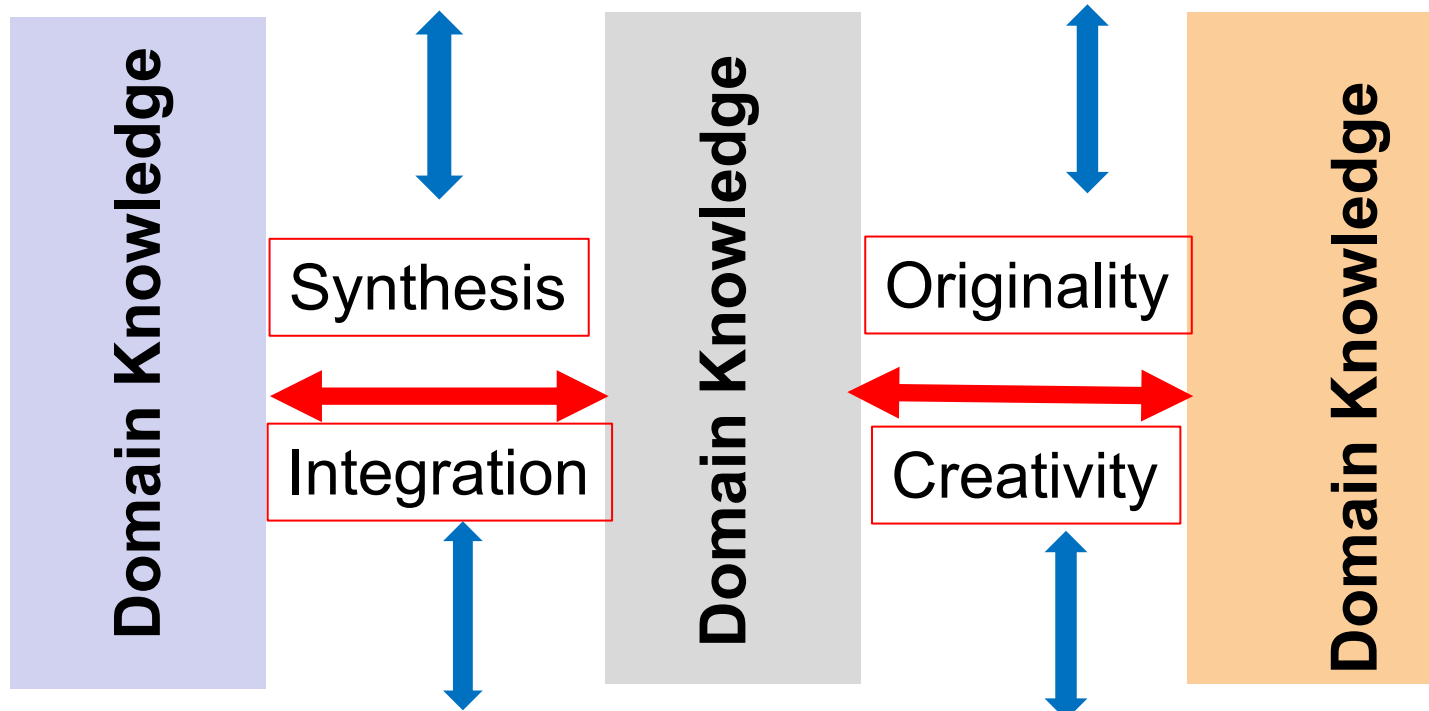
Individual



Team work

# Inter-Disciplinary Learning

## Experiential, Collaborative and Problem-based Learning

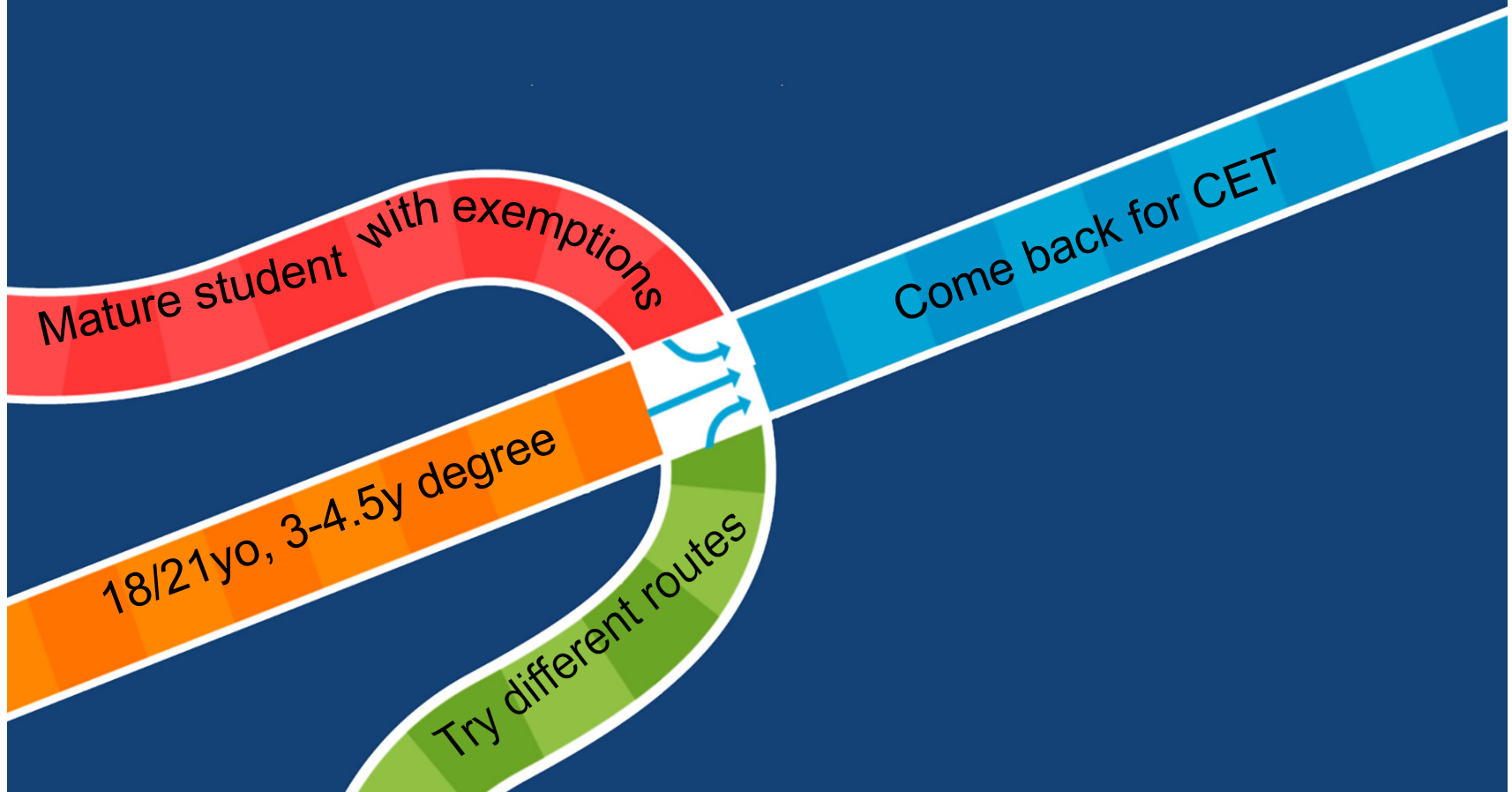


**Broad Intellectual Foundation**

Common Curriculum,  
General Education modules, elective programmes

# Diverse learning pathways

## EDUCATIONAL PATHWAYS



# Lifelong Learners (L<sup>3</sup>)



New Education Model at NUS: A 20-year Commitment